

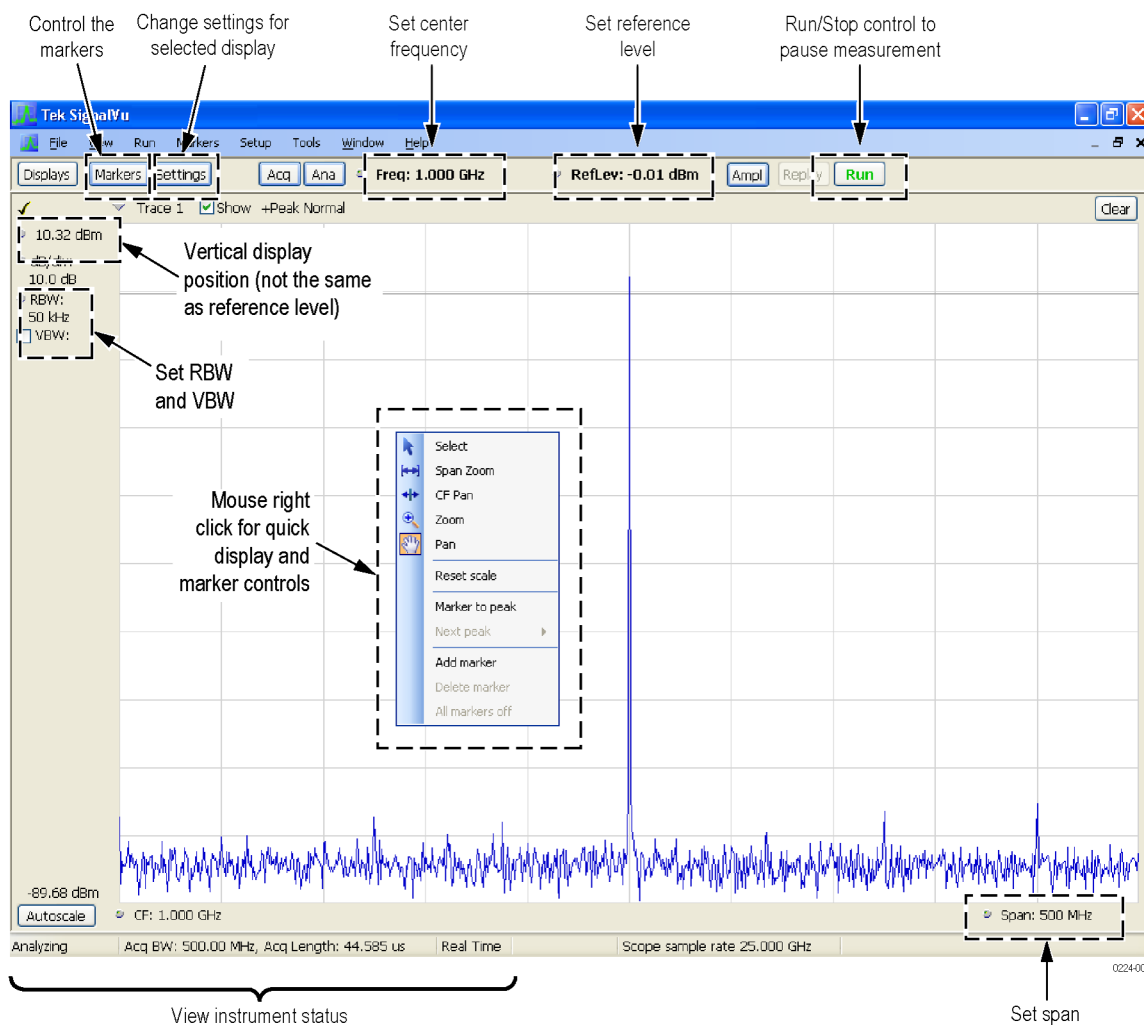
# SignalVu Essentials Reference

## Getting Started with SignalVu Essentials

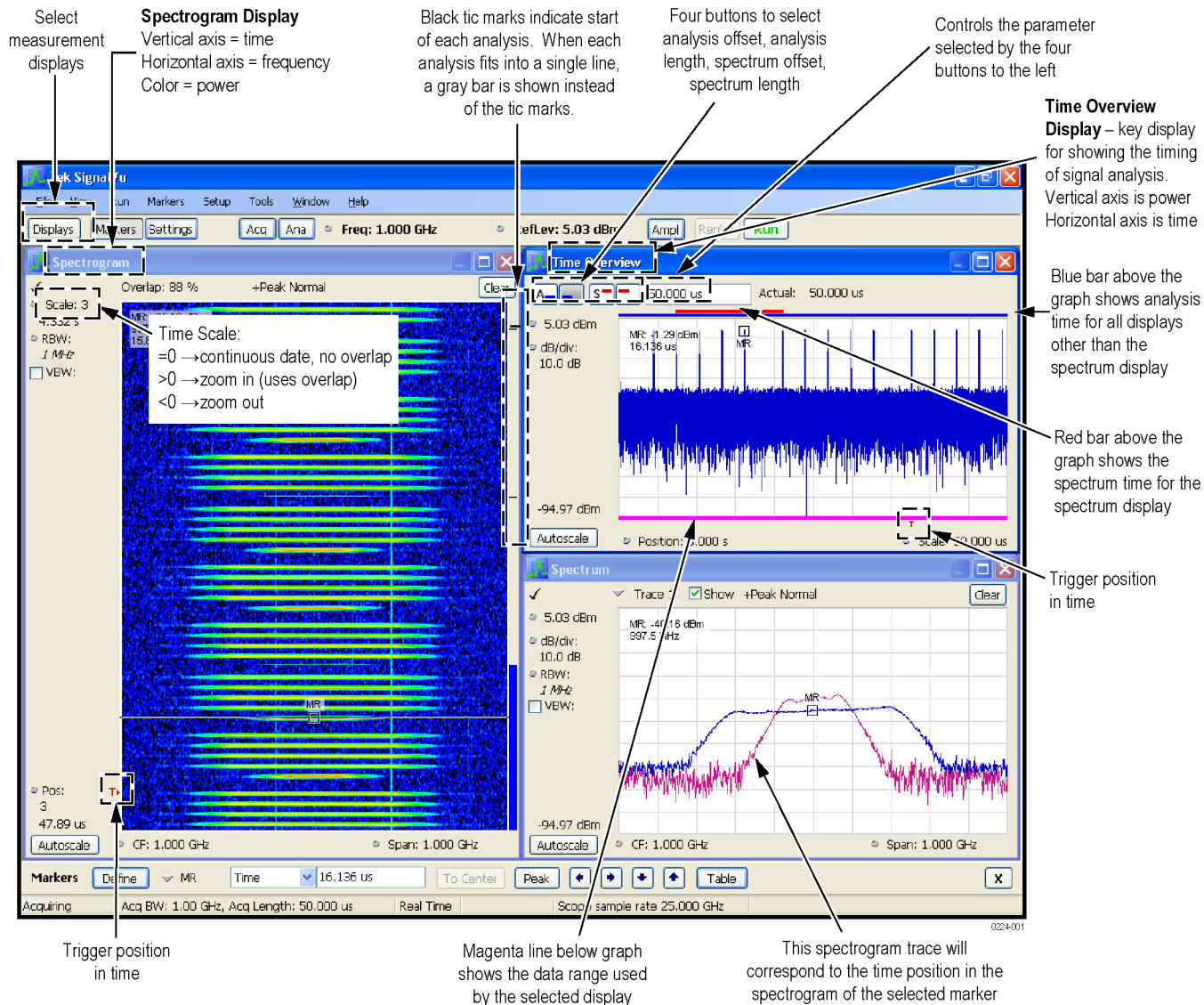
The SVE Vector Signal Analysis software transforms a digital oscilloscope into an analysis tool for measuring and analyzing RF signal behavior. The software is based on that used in the RSA6100A Series Real-Time Spectrum Analyzer.

**NOTE.** For complete operating instructions and general safety information, refer to the online help for the application.

The following figure shows the spectrum display.



This figure shows the spectrogram, time overview, and spectrum displays.



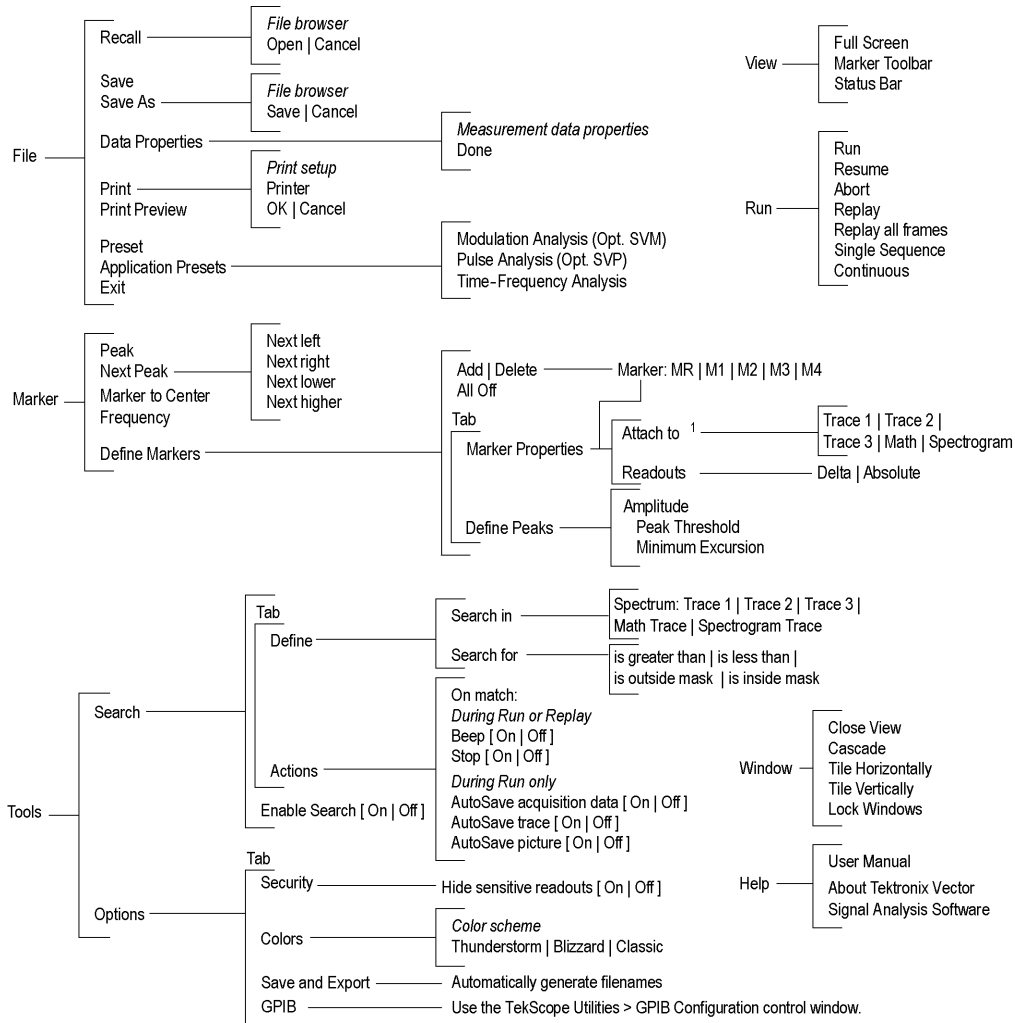
For up-to-date information on Tektronix oscilloscope solutions for SignalVu, access the [www.tektronix.com/Measurement/scopes](http://www.tektronix.com/Measurement/scopes) Web page.

### SignalVu Ordering Information

This software runs on DPO7000 and DPO/DSA70000 series oscilloscopes. Refer to the *Optional Applications Software on Windows-Based Oscilloscopes Installation Manual* for a complete list of supported models.

- Option SVE: SignalVu Essentials – Vector signal analysis software
- Option SVP: SignalVu Pulse – Advanced signal analysis software; Requires SVE
- Option SVM: SignalVu General Purpose Modulation Analysis; Requires SVE

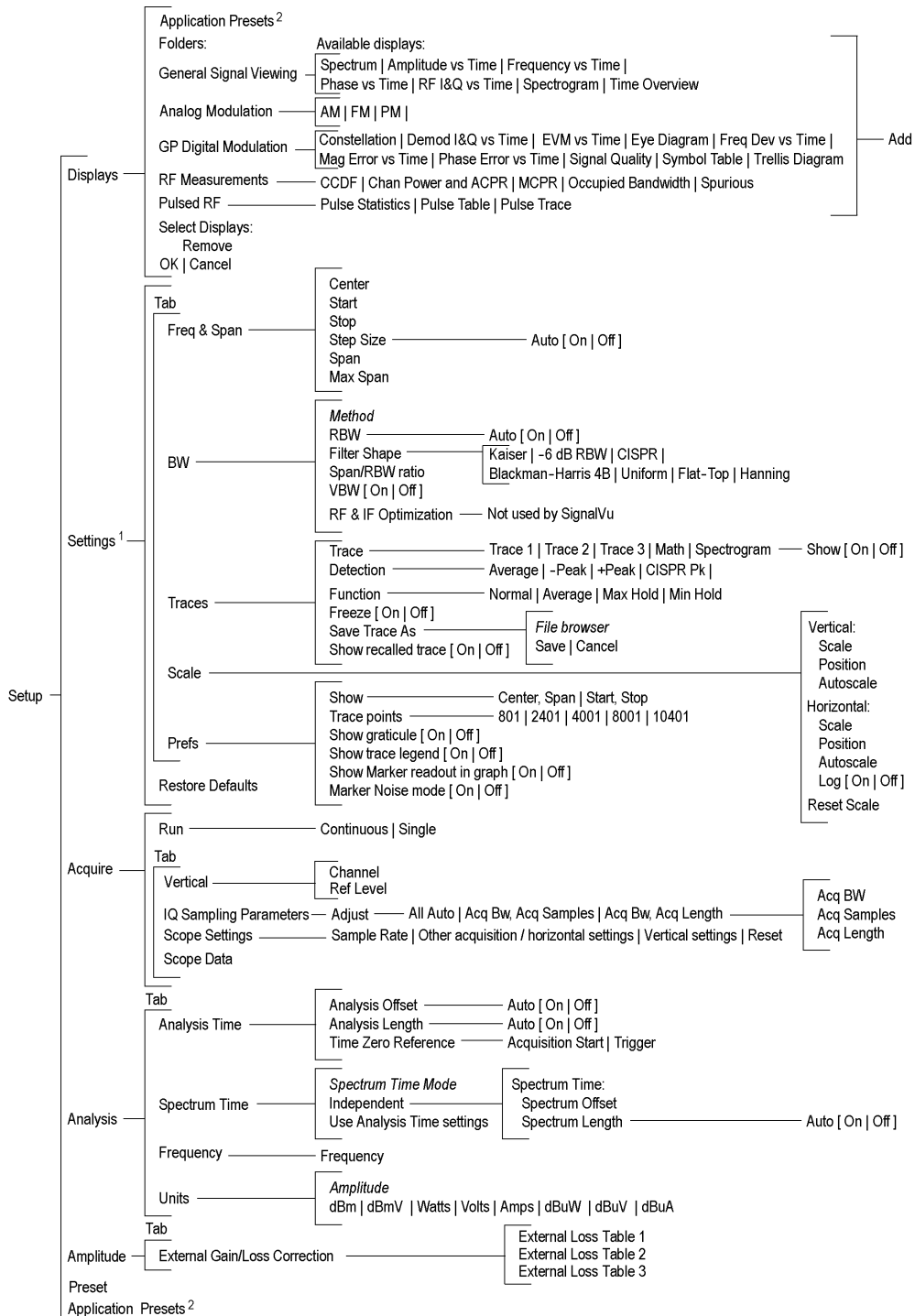
### SignalVu Menu Tree – 1



<sup>1</sup> Varies according to measurement displays. Here is a typical example of the spectrum display. For details, refer to the online help.

0024-000

## SignalVu Menu Tree – 2



<sup>1</sup> Varies according to measurement displays. Here is a typical example of the spectrum display. For details, refer to the online help.

<sup>2</sup> Same as in the File menu.

1024-104